

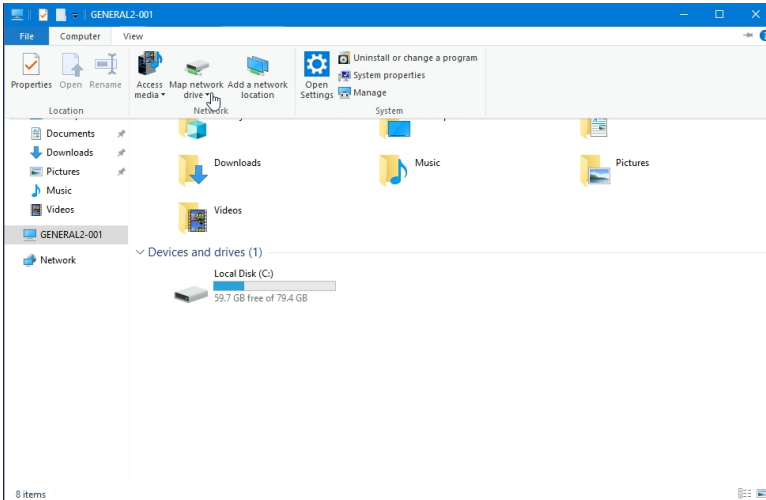
Mapping a File Share

Mapping a SMB File share as a Windows Network Drive

How to:

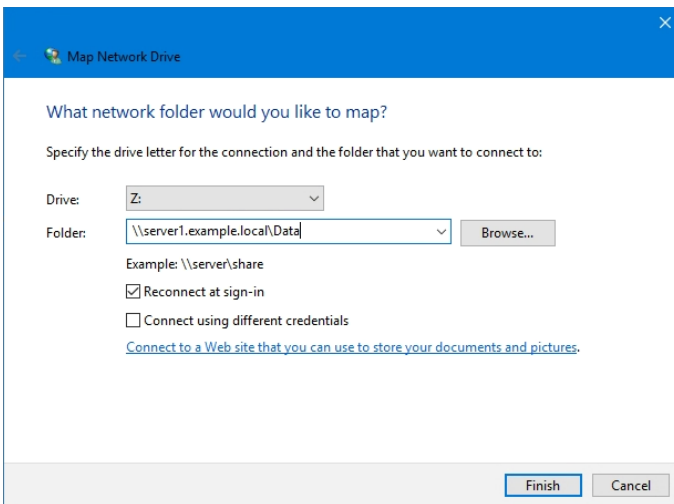
Step 1:

Open "This PC" dialog in File Explorer and select "Computer > Map network drive" on the Ribbon



Step 2:

A dialog will then appear and you will need to select the drive letter and the network share you would like to map. (example network share: `\\server1.example.local\Data`)



Note: if you need to map a share with other credentials than your user account select "Connect using different credentials"

Step 3:

Hit "Finish" and go to your newly mapped drive located under "This PC"

Related articles

- [Office 365 Server Settings](#)
- [How to access email on a phone](#)

- [How to Download and Install Office Applications](#)
- [How to Install Pulse Secure](#)
- [How to map Student Drive](#)